

Treated timber for durability...



OUTDOOR STRUCTURES FURNITURE, PLAYGROUNDS AND RAILS



The guarantee of durable timber



The CTB-B+ mark ensures the timber gives the expected level of conferred durability for the required use in accordance with the requirements of standard NF B 50-105-3

An adapted and controlled process

CTB-B+ is the guarantee for the implementation of quality treatment validated by FCBA and a controlled impregnation process.

Twice a year, FCBA audits the certified companies, ensures the Quality Plan is being followed and conducts sampling.

Simply using a CTB-P+ certified product not guarantee the quality of a timber treatment.

Confirmed effectiveness

CTB-B+ treated timber ensures the structure is resistant to wood-boring insects, wood-rotting fungi and termites.

Indeed, the combination of CTB-B+/CTB-P+ certifications allows the timber to be used in agricultural, wine-producing, aquatic, indoor and outdoor environments, play areas or other public or private spaces.

The environmental declaration sheets and life cycle analysis for CTB-B+ certified timber are available on the INIES database (INIES.fr).

CTB-B+ treated timber is taken to waste reception centres according to the regulations in force.

Responsible use of CTB-P+ certified treatment products

CTB-B+ imposes the use of CTB-P+ certified products.

CTB-P+ makes use in particular of the results of standardised field tests.

DURABILITY AND GUARANTEE :

how do you find it?

Expected durability is defined as the period of time the timber parts used are expected to perform for one single use. This period of time is largely dependent on the conditions of use and the quality of the installation of the treated timber.

A contractual guarantee is a binding commitment from the supplier to its customer to meet the requirements which define the duration and scope.

There are legal safeguards which will be applied if necessary.

Model of attestation of preventive treatment

Use of the logo confirms the certification of the timber

ATTESTATION de TRAITEMENT PREVENTIF N° 01702
Suyvant NF B 50-105-3

Classe d'emploi selon EN 335	1	2	3.1	3.2	4	
Rétentions					4	4 SP
Traitement conféré	<input type="checkbox"/>	<input type="checkbox"/>	<input type="checkbox"/>	<input type="checkbox"/>	<input type="checkbox"/>	<input type="checkbox"/>

France métropolitaine : France métropolitaine et DOM :
 Traitement antitermites : Traitement anti-bleu en service :

Nom du client :
 N° et date de la facture :
 Références du lot :
 Essences de bois :
 Procédé de traitement :

Produit utilisé : (voir informations au verso)
 Fabricant :

Must be CTB-P+ certified

Companies holding the CTB-B+ right of use attest to the quality of the service

OUTDOOR STRUCTURES FURNITURE, PLAYGROUNDS AND RAILS

Outdoor development projects that fit out places (playgrounds, street furniture, etc.), make them more attractive and delimit or facilitate access to public or private spaces.



Performances

The products involved are round timber, unplanned or planed sawn timber for use in use class 3.2 to 4.

Given the duration of service and contact with the public, it is recommended to use CTB-B+ treated timber for use class 4.



Installation

CTB-B+ treated timber ensures the durability of these structures.

It should however :

- avoid water traps
- prohibit any machining after treatment. However, for cuts and holes above ground, the exposed surfaces should be treated with a suitable product to help rebuild the initial level of protection.



Maintenance

CTB-B+ treated timber does require the application of any additional products to ensure durability.

It should be maintained by cleaning using a brush and/or water jet (high pressure prohibited).

Timber treatment professional,
the CTB-B+ holder will provide
you with all advice needed.

CTB-B+
ensures
the durability
of treated timber

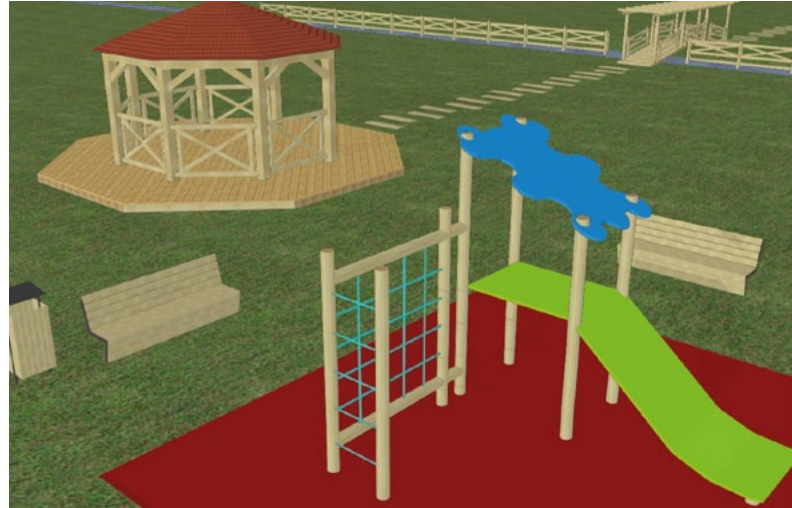
Universal use classes, specifications of different treatments :

Before choosing the timber species, please refer to the use class.

Identical in every country, the uses classes define the situation of the timber in a particular structure. They do not, however, attest to its suitability for use. For the same use class, the treatment requirements may vary from country to country.

Each species has its own characteristics in terms of natural durability (before treatment) and impregnability (capacity to retain the product). The allocation of a species to a use class determines how the timber should be treated. Its effectiveness depends on the selection of the timber, the quality and quantity of the product used and how the process is managed and controlled.

Class	Conditions of use	Example of use	Method of preservation	
			Autoclave	Dipping
1	Internal timbers - Fully protected from adverse weather, not exposed to humidification	Panelling, parquet floors...		X
2	Internal timbers and external sheltered timbers - Protected from adverse weather, occasional but not persistent humidification (condensation)	Roof structures, framing...	X	X
31	External timbers that are not in contact with the ground, subjected to frequent humidification for short periods. Completely dries out in between two damp periods	Cladding	X	X
32	External timbers that are not in contact with the ground, subjected to frequent humidification for long periods. Completely dries out in between two damp periods	Laminated timbers, large sections...	X	
4	External timbers in contact with the ground or with a support subject to recurrent humidification, or fresh water contact, or where the design is such that significant water is retained, or exposed to very pronounced humidification	Fence railings, decking boards, posts, stakes...	X	



NB : The majority of these works should be considered to be in class 4 due to the complexity of their design.



Test your knowledge with the Quiz on

www.ctbbplus.fr



Certification of CTB-B+ services is managed by FCBA (the French Institute of Technology for Forest-based and Furniture Sectors), key player in the timber-construction industry.

FCBA, a certification body accredited by COFRAC* (Certification of Products and Services, no. 5-0011, available on www.cofrac.fr and list of certificate holders available on www.ctbbplus.fr), contributes to the development of European standards for the preservation of timber used in buildings.

Allée de Boutaut - BP 227 - 33028 Bordeaux Cedex - Tél. +33 (0)5 56 43 63 00